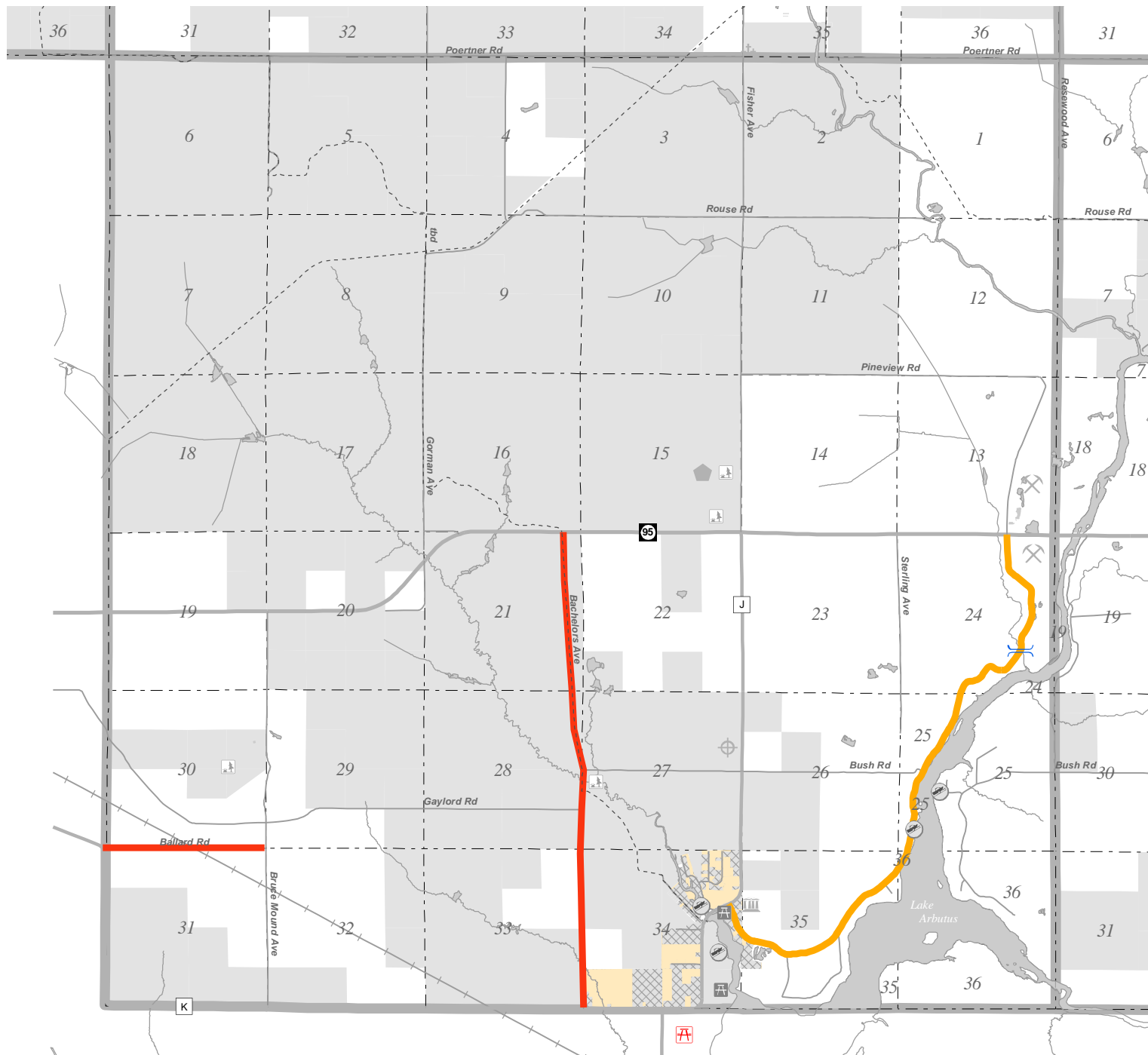


Future Facilities and Services - Town of Dewhurst

Map 4-2



- Future Road Construction**
- Resurface - Gravel - 5 Years
 - Resurface - Pave - 5 years
- Proposed Facilities**
- Bridge Upgrade
 - Future Recreational Facility
 - Proposed Public Sewer Expansion
 - Developed Areas Served by Public Sewer
- Existing Facilities and Services**
- Abandoned Landfills
 - Active Quarry
 - Cemetery
 - Public Boat Landing
 - Public Park - County
 - Recycling / Garbage Drop-off
 - Town Hall
 - Other Recreational Facilities
 - ATV / Snowmobile Trail
 - Surface Water
 - Rivers and Streams
 - Railroad
 - Section Lines
 - Township
 - County Land



Thorp	Withee	Hixon	Hoard	Mayville
Warden	Reseberg	Longwood	Green Grove	Colby
Butler	Mead	Warner	Beaver	Unky
Foster North	Hendren	Eston	Loyal	Sherman
Foster South	Self	Weston	York	Fremont
Mentor	Hewett	Pine Valley	Grant	Lynn
	Deshler	Levis	Washburn	Sherwood

This map is intended for advisory purposes only. It is based on sources believed to be reliable, but Clark County distributes this information on an "AS IS" basis. No warranties are implied. Source: Existing Facilities derived from Clark County Planning and Zoning, Clark County Forestry Department, Clark County Land Conservation, Clark County Health Department, Wisconsin Department of Natural Resources, and USGS 1:24,000 scale topographic maps. Trail locations may change periodically due to land agreements, landscape and trail design. Roads, Lakes, Rivers and Streams derived from 1997 aerial photographs. All Data managed by a Geographical Information System (GIS) and provided by the Clark County Land Information Office, Courthouse Room 204A, Neilsville, WI (715) 743-5130. Map Created by Bill Shockley - April 2004