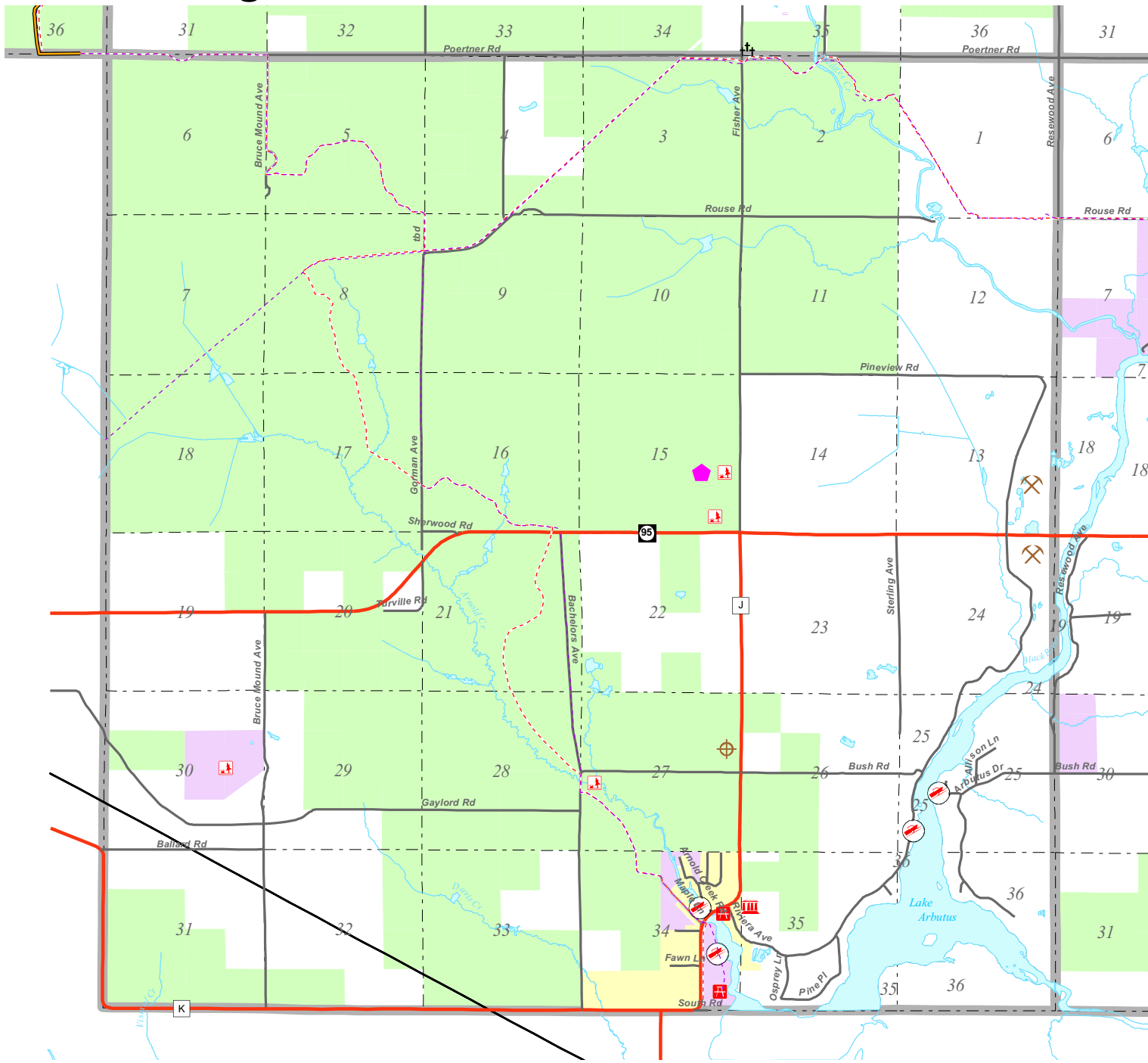


Existing Facilities and Services - Dewhurst

Map 4-1



- Existing Facilities and Services**
- Abandoned Landfills
 - Recycling / Garbage Drop-off
 - Active Quarry
 - Cemetery
 - Church
 - Public Boat Landing
 - Public Park - County
 - Town Hall
 - Other Recreational Facilities
 - Hatfield Sanitary District
 - County Forest
 - County Land
 - Town Boundary
 - Section Boundary
 - Rivers and Streams
- ATV & Snowmobile Trails**
- ATV/Snowmobile Trails and Routes
 - Snowmobile Trail
- Forest & Horse Trails**
- Forest Trail
 - Horse Trail
- Road System**
- Federal, Federal/State
 - State Hwy
 - County Hwy
 - Local Rds



Thorp	Wilkes	Hixon	Hoard	Mayville
Worden	Reeseburg	Longwood	Green Grove	Colby
Butler	Mead	Warner	Beaver	Unity
Foster North	Henden	Eaton	Loyal	Sherman
Foster South	Self	Weston	York	Fremont
Mentor	Hewitt	Pine Valley	Grant	Lynn
	Deshler	Levis	Washburn	Sherwood

This map is intended for advisory purposes only. It is based on sources believed to be reliable, but Clark County distributes this information on an "AS IS" basis. No warranties are implied.

Sources: Existing Facilities derived from Clark County Planning and Zoning, Clark County Forestry Department, Clark County Land Conservation, Clark County Health Department, Wisconsin Department of Natural Resources, and USGS 1:24,000 scale topographic maps. Trail locations may change periodically due to land agreements, landscape and trail design.

Roads, Lakes, Rivers and Streams derived from 1997 aerial photographs.

All Data managed by a Geographical Information System (GIS) and provided by the Clark County Land Information Office, Courthouse Room 204A, Nellsville, WI (715) 743-5130

Map Created by Bill Shockley - April 2004