

# *2009 Annual Report*



**Public Health**  
Prevent. Promote. Protect.

**Clark County Health Department**

517 Court Street RM 105 \* Neillsville, WI 54456 \* 715-743-5105 or toll free 1-877-743-5105

<http://www.co.clark.wi.us/ClarkCounty/departments/PublicHealth/>

# *A Message to the Community*

This 2009 Annual Report provides a brief summary of the public health programs and services available to children and adults in Clark County. The health department has been working hard to assure the major public health needs are addressed. Through continued partnerships with the Board of Health and other community members the health department strives to promote health and prevent disease throughout the county. Thank you for supporting the health and wellness of all Clark County citizens. Please feel free to visit the health department.

Robert Leischow BA, MPH  
Director/Health Officer



## *Vision:*

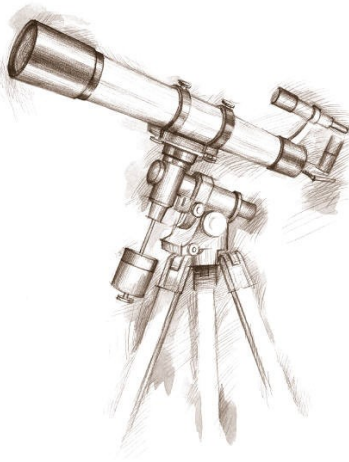
Improve health and enhance the quality of life for all Clark County citizens.

## *Mission:*

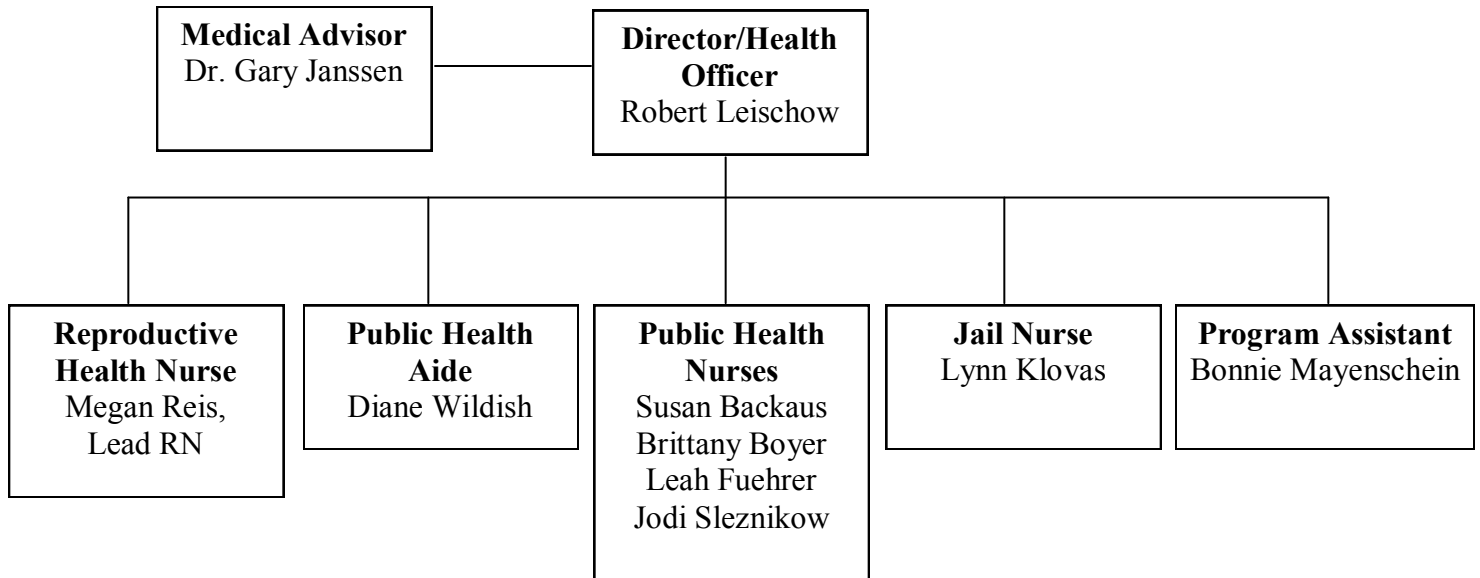
The mission of the Clark County Health Department is to promote health, prevent disease, and protect the citizens of the county through partnerships and population-based services.

This is achieved by providing the following:

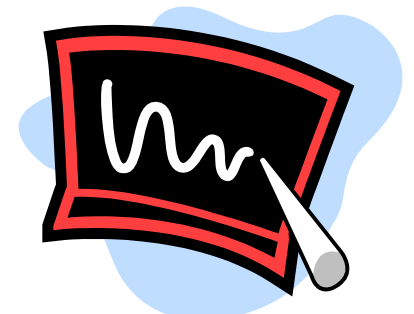
- Preventing epidemics and the spread of disease
- Protecting against environmental hazards
- Preventing injuries
- Promoting and encouraging healthy behaviors through education
- Responding to disasters and assisting communities in recovery
- Assuring and promoting the quality and accessibility of health services



# Clark County Health Department Organizational Chart



<b>Board of Health Members</b>
David Holtzhausen – Chair
Larry Fitzmaurice
Jeff Kolzow
Scott Jalling
Chris Weyer-Parker
Lucy Hoffman
Dr. Gary Janssen
Phyllis Goeke



# *Importance of the Board of Health*

## *Wisconsin State Statutes 251.04 Local board of health; powers and duties*

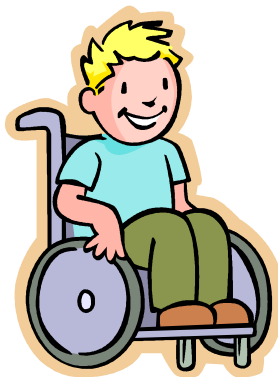
- “...shall assure the enforcement of state public health statutes and public health rules of the department as prescribed for a level I local health department.”
- “...shall assure that its local health department is a level I, level II, or level III local health department...”
- “...may adopt those regulations, for its own guidance and for the governance of the local health department, this it considers necessary to protect and improve public health. The regulations may be no less stringent than, and may not conflict with, state statutes and rules of the department.”
- “...shall report to the department as required by rule.”
- “...shall meet at least quarterly.”
- “...shall assess public health needs and advocate for the provision of reasonable and necessary public health services.”
- “...shall develop policy and provide leadership that fosters local involvement and commitment, that emphasizes public health needs and that advocates for the equitable distribution of the public health resources and complementary private activities commensurate with public health needs.”
- “...shall assure that measures are taken to provide an environment in which individuals can be healthy.”
- “...shall employ qualified public health professionals, including a public health nurse to conduct general public health nursing programs under the direction of the local board of health and in cooperation with the department, and may employ one or more sanitarians to conduct environmental programs...”
- “...shall coordinate the activities of any sanitarian employed by the governing body of the jurisdiction that the local board of health serves.”

# Children and Youth with Special Health Care Needs

**Objective:** By December 31, 2009, 24 children and youth with special healthcare needs (CYSHCN) and their families will receive referral and follow-up from the Clark County Health Department.

CYSHCN is a program designed to meet the health care needs of families with special healthcare needs. This is done through a regional and statewide coordinated system of information, referral and follow-up, parent to parent support and service coordination.

<b>Intervention</b>	<b>2009</b>	<b>2008</b>	<b>2007</b>
<b>Case finding</b>	7	9	13
<b>Case Management</b>	6	8	3
<b>Contraceptive Services</b>	1		
<b>Referral &amp; Follow-up</b>	22	18	7
<b>Health Teaching</b>	2	2	13
<b>Screening/Brief Contacts</b>	2		5
<b>Total Clients Served</b>	26	25	27



# Prevention

The Clark County Health Department continued to work with the diabetes prevention program at the Clark County Courthouse, CCHCC, and ADS. A new worksite was added this year to include the Granton School. A wellness committee was formed and a health topic survey was completed by 20 people at this site. The survey revealed that the majority employees were interested in diet and nutrition education followed stress management.

Through several different wellness efforts the county is now a little lighter. These statistics are highlighted below:

	# of Participants	Pounds Lost
Lighten up Wisconsin	16	90
Court House Biggest Loser	34	278
Granton School	24	261
McMilers	27	100 miles/week x 12 weeks

The health department also partnered with Memorial Medical Center to do wellness screenings at OEM. Twenty-six employees participated in blood pressure checks, blood glucose screening, and seasonal flu vaccinations.

The Clark County Health Department diabetes prevention program continues to focus on increasing physical fitness and weight reduction/maintenance.



# School Screening Services

**Objective:** To increase the proportion of persons who have had a hearing examination on schedule, to reduce blindness and visual impairment in children and adolescents age 17 and under, to increase the proportion of persons appropriately counseled about health behaviors.

We provide county public/parochial and Amish/Mennonite schools with nursing services, screening and referrals, and health promotion education.

Combining our services with dedicated school volunteers the following screening services were provided to children in early childhood education and other grade levels.

## Public/Parochial Schools

Service	Screened/Referred '09	Screened/Referred '08	Screened/Referred '07
Vision	1836/146	1727/159	1778/126
Hearing	1360/19	1330/30	1342/15

## Amish/Mennonite Schools

Service	Screened/Referred '09	Screened/Referred '08	Screened/Referred '07
Vision	485/41	413/56	504/19
Hearing	445/6	439/14	511/22



# *Public Health Preparedness*

Preparedness activities in 2009 included holding a table-top discussion on pandemic awareness, and an exercise on communication abilities.

In 2009, the department received a Pandemic Influenza grant to help provide education and community outreach and work on a preparedness response plan. One outreach activity included a presentation on Pandemic Flu and preparedness to 260 people in November. Other successes include the development and implementation of school and hospital surveillance programs to be able to recognize potential outbreaks.



## *School and Hospital Surveillance*

Timely and routine monitoring of student absenteeism can serve as an early warning system and help paint a more complete picture of disease transmission in the community. School surveillance allowed the Clark County Health Department to monitor trends in absenteeism due to flu-like illness (H1N1 Influenza virus) in Clark County. All school districts in the county participated in this surveillance to assist the health department in making decisions about possible school closings and parent and public education.

Local hospital surveillance done at Memorial Medical Center-Neillsville and Our Lady Victory-Stanley has allowed us to view trends in illness' being presented to their Emergency Rooms. Illness' reported include GI-vomiting and diarrhea, rashes, fever of unknown origin, and respiratory issues.

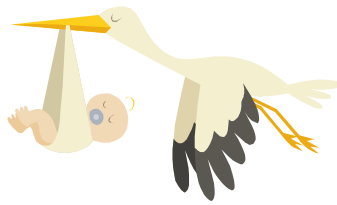


# *Prenatal Care Coordination*

**Purpose:** To assess, identify, and intervene with medical, emotional, socioeconomic, and environmental risk factors which affect pregnancy outcome. To promote access to health care system, and to provide needed support and referrals to other agencies.

Public Health Nurses provide support and education to promote a healthy pregnancy and healthy baby. Services include regular contact with a Public Health Nurse, prenatal education, smoking cessation counseling (First Breath), visits after the baby is born, and linking clients with needed services in the community.

In 2009, 33 clients participated in Prenatal Care Coordination compared to 21 in 2008.



## *Fluoride Mouth Rinse*

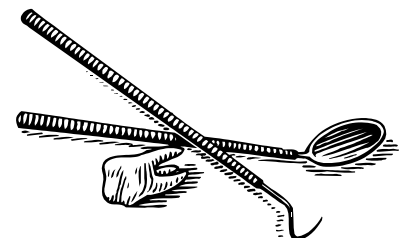
**Objective:** By December 31, 2009, 475 children ages 6 years or older from non-fluoridated communities will participate in a weekly school-based fluoride mouthrinse program administered by the Clark County Health Department.

Three public school districts in Clark County do not have fluoridated city water these districts include Granton, Owen-Withee, and Thorp. The Clark County Health Department coordinates a fluoride mouth rinse program for these schools. Participating students are given a mouth rinse containing fluoride once a week during the school year. In 2009 a total of 560 students completed the 38 weeks of rinses compared to 525 in 2008 and 478 in 2007.

## *Fluoride Varnish*

**Objective:** Prevention of early childhood caries.

Fluoride varnish provides a dose of fluoride directly to the surface of the teeth. Fluoride has been proven to protect teeth from decay and can be applied to the teeth every three months. A total of 264 children ages 6 months to 5 years of age received fluoride varnish applications in 2009 as compared to 438 in 2008.



# *Immunization Program*

**Objective:** By December 31, 2009, 60% of children residing in Clark County who turn 24 months of age during the contract year will complete 4 DTaP, 3 Polio, 1 MMR, 3 HIB, 3 Hepatitis B and 1 Varicella vaccination by their second birthday.

A total of 560 Clark County clients were included in this 2009 objective. Of those clients, 293 (52%) met all criteria, and 309 (55%) were late up to date.

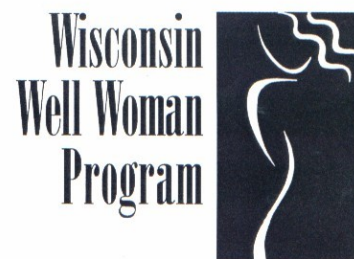
Immunizations are provided in the school setting, Health Department, and at community immunization clinics. Childhood vaccines are provided free from the State Division of Public Health. The Clark County Health Department works with private medical providers to assure that all children receive proper immunizations. A total of 2,287 vaccines were administered by the health department in 2009 compared to 2,512 in 2008 and 1,986 in 2007. An additional 2,201 H1N1 vaccines were administered in 2009.

2009 immunization statistics are highlighted below:

	Under 1 YR	1yr	2yrs	3-4yrs	5yrs	6-9yrs	10-14yrs	15-19yrs	20-24yrs	25-44yrs	45-64yrs	65+ YRS	Total
DTaP	2	55	16	4	9	2	0	0	0	0	0	0	88
DTaP-Hep B-IPV	114	41	7	5	3	3	0	0	0	0	0	0	173
DTaP-IPV	1	1	0	1	24	34	0	0	0	0	1	0	62
DTaP-IPV/Hib	59	21	1	1	0	0	0	0	0	0	0	0	82
H1N1	16	44	60	145	76	296	536	284	29	299	315	101	2201
HPV4	0	0	0	0	0	0	23	24	0	0	0	0	47
HepA	0	18	5	4	1	2	1	6	0	2	0	1	40
HepA-B	0	0	0	0	0	0	0	0	0	22	11	0	33
HepB	27	9	0	0	0	0	1	5	0	17	19	3	81
Hib	99	78	7	0	0	0	0	0	0	0	0	0	184
IPV	1	3	5	1	5	6	3	1	0	0	0	0	25
LAIV(flu nasal)	0	0	0	5	2	23	25	11	1	16	0	0	83
MCV4 Menactra	0	0	0	0	0	0	7	23	0	0	0	0	30
MMR	1	77	7	5	36	42	4	6	1	4	1	0	184
PCV7	49	39	1	1	0	0	0	1	0	0	0	0	91
PPSV23	0	0	0	0	0	0	0	0	0	0	1	1	2
RV1 Rotarix	12	0	0	0	0	0	0	0	0	0	0	0	12
RV5 RotaTeq	4	0	0	0	0	0	0	0	0	0	0	0	4
TIV (flu)	13	17	12	14	6	27	20	12	7	70	130	100	428
Td (adult)	0	0	0	0	0	2	2	1	2	3	1	22	33
Tdap	0	0	0	0	0	1	222	77	3	22	24	1	350
Typhoid-oral	0	0	0	0	0	0	0	0	0	1	0	0	1
VAR	1	34	7	9	24	37	93	17	5	3	1	0	231
ZOS	0	0	0	0	0	0	0	0	0	0	1	22	23
<b>Total</b>	<b>399</b>	<b>437</b>	<b>128</b>	<b>195</b>	<b>186</b>	<b>475</b>	<b>937</b>	<b>468</b>	<b>48</b>	<b>459</b>	<b>505</b>	<b>251</b>	<b>4488</b>

# Wisconsin Well Woman Program

**Objective:** By December 31, 2009, 35 Clark County residents 45-64 years will be screened through the Wisconsin Well Woman Program.



The Wisconsin Well Woman Program is a statewide program funded by the Center for Disease Control that provides free health services to low income, uninsured or underinsured women ages, 45-64.

Services include:

Breast and cervical cancer screening (yearly breast exam, pelvic exam, pap test, and mammogram, and follow-up screenings for abnormal results).

All Clark County medical clinics, hospitals, and radiologists participate in the program. This enables women to see their own physician.

Women enroll through the Clark County Health Department as well as through local hospitals and medical clinics. The program coordinator, works with local clinics and hospitals on reporting and billing issues, follow-up on screening results, assists women in securing funding for additional testing and treatment, and informs women about the program through the news media and public presentations to community groups.

Number of clients who received a mammogram in 2009 - **38**

Number of clients who received a pap test in 2009 – **21**

<b>STATISTICS</b>	<b>2009</b>	<b>2008</b>	<b>2007</b>	<b>2006</b>
Total number of clients enrolled	<b>81</b>	92	89	84
Number of new clients enrolled	<b>16</b>	21	13	17
Number with abnormal breast screenings	<b>4</b>	5	5	4
Number with abnormal pap/pelvic tests	<b>0</b>	3	2	2
Number diagnosed with breast cancer	<b>2</b>	4	1	0
Number diagnosed with cervical/uterine cancer	<b>0</b>	1	0	0
Number diagnosed with precancerous cervical lesion	<b>0</b>	0	0	0



Number of clients who received a mammogram in 2008 - **33**

Number of clients who received a pap test in 2008 - **22**

# Reproductive Health & Family Planning

**Objective:** By December 31, 2009, 25 unduplicated women of reproductive age will receive early intervention and screening of pregnancy services from Clark County Health Department Reproductive Health Program.

There were 24 unduplicated clients seen in 2009 for early pregnancy intervention. A total of 314 unduplicated clients were seen at the Reproductive Health office for other services, including birth control, STI testing and treatment, referrals for medical care and the Wisconsin Well Woman Program.

	2009	2008	2007
# of Pregnancy Tests Done	24	24	18
# of Positive Pregnancy Tests	5	6	3
# Unduplicated Clients	314	311	309

**Reproductive Health is MORE  
than just birth control!**

**We offer:**

- Counseling
- Inexpensive birth control supplies
- Low cost pregnancy tests
- Referrals for medical care
- Tests & treatment for STI's



# *COMMUNICABLE DISEASE PROGRAM*

**Purpose:** To provide follow-up and education services to prevent reoccurrence and spread of disease.

Communicable diseases are illnesses that can be transmitted from one individual to another by direct or indirect contact with contaminated objects. Communicable diseases may be caused by bacteria, viruses, fungi and parasites. Certain communicable diseases are mandated by statute to be reported to the health department for investigation, control and prevention of spread among the population.

<b>DISEASE</b>	<b>2009</b>	<b>2008</b>	<b>2007</b>
E. Coli	1	0	5
Hepatitis Viral Type A	1	0	0
Pertussis	2	2	41
Tetanus	0	0	0
Haemophilus influenza	0	1	2
HIV	0	0	0
Babesia	1	1	2
Blastomycosis	1	2	2
Campylobacter enteritis	23	37	19
Cryptosporidium	14	21	24
Giardiasis	11	2	8
Hepatitis C	12	7	4
Lyme Disease	70	74	53
Meningitis, bacterial	0	1	2
Salmonellosis	6	1	8
Streptococcus pneumoniae	0	6	3
Streptococcal disease	4	3	8
West Nile Virus	0	0	0
Chlamydia	48	33	33
Gonorrhea	1	0	1
Blastomycosis	1	2	2
Ehrlichiosis	8	9	18
Mycobacterium Avium Intracellular Complex	1	1	1
Mycobacterium Abscess	0	0	2
Mycobacterium Chelonae	2	0	3
Mycobacterium Gordonae	0	0	0
Shigellosis	0	2	8
Yersinia enterocolitica	0	1	0
Syphilis	0	0	0
Mumps	0	4	0
Hemolytic Uremic Syndrome	0	0	0

# Environmental Health

**Purpose:** To assure that the public is protected from the risk of illness and injury from unsanitary conditions and safety hazards.

The Clark County Health Department investigates environmental health complaints and, as needed, enforces the local Human Health Hazard ordinance.

Below are the 2009 statistics for Clark County.

REASON / COMPLAINT	2009	WELL WATER TESTING – 82 Total Tests
Garbage	1	<b>2009 RESULTS</b>
Sewage	1	Nitrates & Bacteria Safe – 67
Housing Concerns	2	Nitrates Unsafe- 6
Hazardous Materials	1	Bacteria Unsafe – 9
Mold	5	

## Beach Testing

**Purpose:** To instill public confidence, protect the public health, to use indicator levels to correlate human illness such as sore throats, diarrhea, meningitis, encephalitis, and severe gastroenteritis. To predict high-risk situations before they become a public health factor.

Beach testing is done throughout the summer to assure safe swimming conditions at Clark County public beaches. If a test demonstrates a high E.Coli result the beach will be closed until levels are safe for swimming.

BEACH	# of Tests Done	Results	Abnormal
Rock Dam Lake	7	1 – 121 cfu/100mL	NONE
Snyder Lake	8	3 – 272 cfu/100mL	1 test abnormal (272)
Sherwood Lake	8	1 - 50 cfu/100mL	NONE
Mead Lake	8	2 – 34 cfu/100mL	NONE
Russell Co. Park	8	1 – 326 cfu/100mL	1 test abnormal (326)

\*Normal EPA recommendations for E.Coli-----<235 cfu/100ml. as a single sample.

# Childhood Lead Poisoning Prevention

**Objective:** By December 31, 2009, 31 pre-1950 housing units or childcare sites will be assessed using the Wisconsin Childhood Lead Poisoning Prevention Program Standard for Home/Childcare Site Based Intervention to Address Lead Hazards. There were 30 homes tested in 2009, 24 tested positive for lead.

This program allows the health department to assess, identify, and provide education about lead-based paint hazards.

	Homes tested '09	Homes Tested '08	Homes Tested '07
Homes tested where pregnant women or children less than 6 years of age reside.	<b>30</b> (24 tested positive for lead)	<b>37</b> All tested positive	<b>14</b>
Homes targeted for inspection after children found to have venous blood lead levels higher than 10 mcg/dl.	No high lead levels in '09	No high lead levels in '08	No high lead levels in '07

## RADON

**Objective:** By December 31, 2009, 25 residents in Clark County will have been outreached to and completed testing in their homes.

In 2009, the Clark County Health Department promoted radon testing and mitigation through outreach activities which included public efforts such as two community health fairs and the county fair. Outreach and education to individuals was conducted by public health nurses to families through the agency's prenatal and postpartum home visiting program. The Clark County Health Department provided radon test kits to 30 households; 17 tests were completed, 4 of which demonstrated elevated levels.

# ANIMAL BITES

**Purpose:** To assure that serious illness or death from exposure to animal to human transmission of rabies will be prevented. This program is designed to coordinate an effective rabies control procedure between Clark County Health Department, Sheriff's Department, veterinarians, physicians, cities, villages, town boards, and the general public.

<b>ANIMAL BITES</b>		'09	'08	'07
	# Reported to Clark County Health Department	41	39	41
	<b>TOTAL</b>	<b>41</b>	39	41



## Jail Health

**Purpose:** To provide medication management, first aid, coordinate medical appointments/transportation with jail supervisor for incarcerated individuals. To also prevent and control spread of disease between inmates through vaccination, specimen collection, and Tuberculosis skin testing.



	2009	2008	2007	2006
# of RN Contacts	1840	1572	1757	1537
TB skin tests done on inmates	173	219	198	202
# of positive inmate TB tests	5	5	8	12
Prescription Med Setup for Inmates	1367	1454	1528	1496
Inmates seen by Jail PA	100	77	105	55

# *Tobacco Prevention and Control*

**Vision:** Establish and maintain a tobacco free environment that promotes a healthy lifestyle.

**Mission:** To work together in partnerships to decrease the usage and exposure to second hand smoke.

- **Expanding the science base of tobacco control.**
- **Building the science base of tobacco control.**
- **Communicating information to constituent and the public.**
- **Facilitating concerted action with and among partners.**

In 2009 there were many opportunities for the public to learn about the effects smoking has on their health. Education about the effects of smoking on heart health and smoking cessation support through the Quit Line were presented to the public. A Tobacco education committee was also formed to help educate communities about the effects of tobacco on health.

A Woman of Influence event was held at the Clark County Health Care Center. There were 87 women who attended the event to learn about women's health, and the effects that alcohol, substance abuse, and nicotine dependence have on the body.



# Natality Profile for Clark County Residents

	<b>Clark Co.</b>	<b>Wisconsin</b>
Total Population*	34,552	5,627,297
Female Population Age 15-44*	6,370	1,121,799
Births in 2009:	572	72,002

\*(based on 2008 WI Interactive Statistics on Health (WISH) data)

## Clark County Community Health Profile Infants and Pregnant Women

(all data from Wisconsin Public Health Information Network)

<u>Low Birth Weight Infants</u>	<u>Number</u>	<u>Percent</u>
Total	(2009) 29	5.0%
	(2008) 31	5.5%

<u>Premature Births</u>	<u>Number</u>	<u>Percent</u>
Total	(2009) 31	5.4%
	(2008) 12	2.0%

<u>Trimester of First Prenatal Visit</u>	<u>2009</u>		<u>2008</u>	
1 <sup>st</sup> Trimester	326	56.9%	316	54.8%
2 <sup>nd</sup> Trimester	182	31.8%	207	35.9%
3 <sup>rd</sup> Trimester	54	9.4%	46	7.9%
No care	5	0.87%	3	0.52%
Missing/unknown	5	0.87%	4	0.96%

<u>Birth Rates</u>	<u>2009</u>		<u>2008</u>	
Total Births	572		570	
Teen Births	32		21	
Crude live Birth Rate	16.6		16.6	
	(# of births in a given year divided by total # in population) (per 1000)			
General Fertility Rate	89.8		88.6	
	(# of births in a given year divided by female population 15-44) (per 1000)			

### Total Births by Age of Mother

	<u>2009</u>	<u>2008</u>
15-17	5	5
18-19	27	16
20-24	145	150
25-29	185	190
30-34	115	122
35-39	69	63
40-44	26	24
<b>TOTAL</b>	<b>572</b>	<b>570</b>

<u>Births By Maternal Characteristics</u>	<u>2009</u>		<u>2008</u>	
Less than high school education	263	45.9%	254	44.1%
Smoked while pregnant	79	13.8%	71	12.3%
First birth	146	25.5%	145	25.2%
Unmarried	120	20.9%	98	17.1%

<u>Infant Deaths</u> (source: DPH County Profile)	<u>2008</u>	<u>2007</u>
Neonatal deaths (<28 days)	1	3
Post neonatal deaths (28 days – 1 year)	1	1
Total infant deaths (<1 year)	2	4

# *MORTALITY*

<u>Deaths by Selected Causes</u>	<u>2008 rate*</u>	<u>2007 rate</u>	<u>2006 rate</u>
Heart Disease (total)	292	240	244
Malignant Neoplasms (total)	214	173	180
Cerebrovascular Disease	46	53	52
Chronic Lower Resp. Disease	87	26	55
Pneumonia & Influenza	14	26	X
Diabetes	35	20	26

### \*Death rate (per 100,000)

2006 All deaths: 907

2007 All deaths: 866

2008 All deaths: 981

\*Source: Wisconsin Department of Health Services

### Cancer Incidence

<b>Primary Site</b>	<b>2006</b>	<b>2004</b>
Breast	20	29
Cervical	0	0
Colorectal	11	17
Lung and Bronchus	21	25
Prostate	34	30
Other Sites	97	89
<b>Total</b>	<b>183</b>	<b>190</b>

Note: Totals shown are for invasive cancers only.

## MOTOR VEHICLE CRASHES

	<b>2009</b>	<b>2008</b>	<b>2007</b>
<b>Persons hospitalized due to motor vehicle crashes</b>	136	159	182
<b>Deaths</b>	6	3	6

Source: WI Department of Transportation



# **Public Health**

Prevent. Promote. Protect.

## **CLARK COUNTY HEALTH DEPARTMENT**

**517 Court Street, Room 105  
Neillsville, WI 54456  
Tel: 715.743.5105  
Fax: 715.743.5115**

**<http://www.co.clark.wi.us/ClarkCounty/departments/PublicHealth/>**